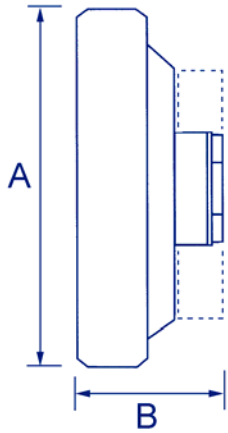


THERMOMETERS



33M

CLIP-ON MAGNETIC TEMPERATURE GAUGE



Part No 33M

SURFACE MOUNTED COMPLETE WITH MAGNET

A	66
B	26

The 33M is a bi-metal temperature gauge which is used to measure the surface temperature of radiators and ferrous material by use of a magnet.

Features & Benefits

- Easy installation.
- Can be used in many applications.
- Economical & reliable.

MATERIALS	
Case	Steel
Bezel	Polished Steel
Window	Glass

MODEL	DIAL	RANGE
33/409/0	66mm	0 to 120°C&F